



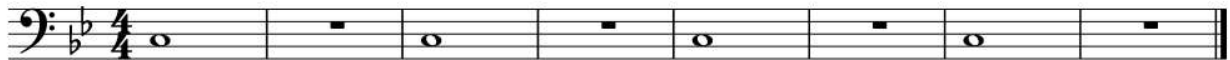
# 1. Your First Note!

<b>D</b>

4

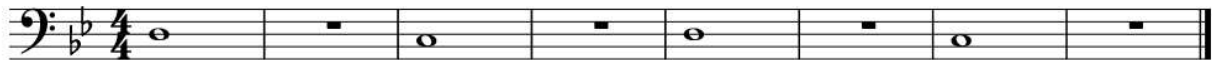


# 2. Second Note Swag


<b>C</b>

6




# 3. Two Note Tango



# 4. Easy as 1, 2, 3... Notes!

<b>A#/Bb</b>

1



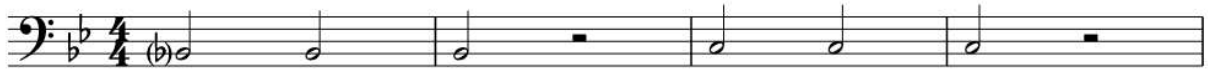
# 5. All Mixed Up



## 6. Still Mixed Up



## 7. Half Note Hustle



5



## 8. Cardiff By the Sea



5



## 9. Crazy About Quarter Notes



5



# 10. Hot Cross Buns



5



# 11. Au Claire de la Lune



5

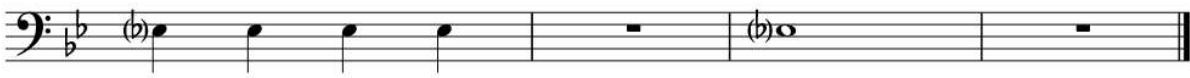


# 12. New Note!

D#/Eb
3



5



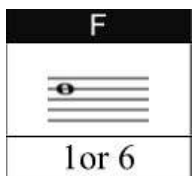
**\* Improve Your Skills \***



5



**13. And Another One**



**\* Improve Your Skills \***



5



**14. Mary Had a Little Lamb**

5



# 15. Good King Wenceslas

5

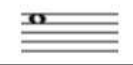
The musical notation for 'Good King Wenceslas' is written in bass clef, 4/4 time, and B-flat major. The first staff contains the first four measures of the melody, with a '5' above the first measure. The second staff contains the next four measures, ending with a double bar line. The notes are: G2, A2, Bb2, C3, D3, E3, F3, G3, A3, Bb3, C4, D4, E4, F4, G4.

# 16. Dreidel, Dreidel

5

The musical notation for 'Dreidel, Dreidel' is written in bass clef, 4/4 time, and B-flat major. The first staff contains the first four measures of the melody, with a '5' above the first measure. The second staff contains the next four measures, ending with a double bar line. The notes are: G2, A2, Bb2, C3, D3, E3, F3, G3, A3, Bb3, C4, D4, E4, F4, G4.

# 17. Time For a New Note

<b>G</b>

4

The musical notation for 'Time For a New Note' is written in bass clef, 4/4 time, and B-flat major. The first staff contains the first four measures of the melody, with a '5' above the first measure. The second staff contains the next four measures, ending with a double bar line. The notes are: G2, A2, Bb2, C3, D3, E3, F3, G3, A3, Bb3, C4, D4, E4, F4, G4.

# \* Improve Your Skills \*

5

The musical notation for 'Improve Your Skills' is written in bass clef, 4/4 time, and B-flat major. The first staff contains the first four measures of the melody, with a '5' above the first measure. The second staff contains the next four measures, ending with a double bar line. The notes are: G2, A2, Bb2, C3, D3, E3, F3, G3, A3, Bb3, C4, D4, E4, F4, G4.

### 18. Jolly Old St. Nick

5

Musical notation for 'Jolly Old St. Nick' in bass clef, 4/4 time, key of B-flat. The first staff contains the first four measures. The second staff, starting with a measure rest labeled '5', contains the next four measures, ending with a double bar line.

### 19. Jingle Bells

6

12

Musical notation for 'Jingle Bells' in bass clef, 4/4 time, key of B-flat. The first staff contains the first four measures. The second staff, starting with a measure rest labeled '6', contains the next six measures. The third staff, starting with a measure rest labeled '12', contains the final four measures, ending with a double bar line.

### 20. Song of the Fjords

5

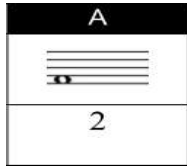
Musical notation for 'Song of the Fjords' in bass clef, 4/4 time, key of B-flat. The first staff contains the first four measures, with flats under the first and second notes of the first two measures. The second staff, starting with a measure rest labeled '5', contains the next four measures, also with flats under the first and second notes of the first two measures, ending with a double bar line.

### 21. Old MacDonald

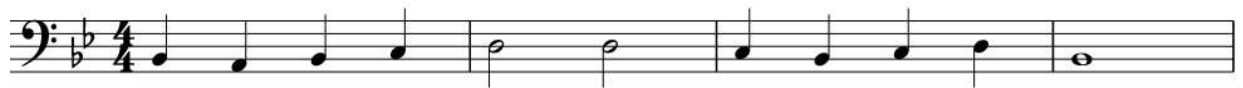
5

Musical notation for 'Old MacDonald' in bass clef, 4/4 time, key of B-flat. The first staff contains the first four measures. The second staff, starting with a measure rest labeled '5', contains the next four measures, ending with a double bar line.

## 22. So Many Notes, So Little Time



## 23. Sweetly Sings the Donkey



5



## 24. Crusader's March



5



## 25. Mary Ann



6



12



## 26. Jim Along Josie



## 27. William Tell



5



## 28. Skip to My Lou



5





### 29. Theme from "Symphony No. 1"

5

Musical notation for the first two staves of 'Theme from "Symphony No. 1"'. The first staff is in bass clef, 4/4 time, and B-flat major. It begins with a quarter note G2, followed by a half note G2-A2, a quarter note B2, and a half note A2-G2. The second staff continues with a half note G2, a quarter note A2, a quarter note B2, a quarter note A2-G2, and a half note G2. The piece ends with a double bar line.

### 30. Frere Jacques

*f*

Musical notation for the first staff of 'Frere Jacques'. It is in bass clef, 4/4 time, and B-flat major. The notation includes a dynamic marking of *f* (forte) and repeat signs with first and second endings. The piece ends with a double bar line.

### 31. Mexican Hat Dance

*f* *p*

Musical notation for the first staff of 'Mexican Hat Dance'. It is in bass clef, 3/4 time, and B-flat major. The notation includes dynamic markings of *f* (forte) and *p* (piano). The piece ends with a double bar line.

### 32. Morning Mood from Peer Gynt

*p*

5

Musical notation for the first two staves of 'Morning Mood from Peer Gynt'. The first staff is in bass clef, 3/4 time, and B-flat major. It begins with a half note G2, followed by a quarter note A2, a quarter note B2, and a half note A2-G2. The second staff continues with a half note G2, a quarter note A2, a quarter note B2, a quarter note A2-G2, and a half note G2. The piece ends with a double bar line.

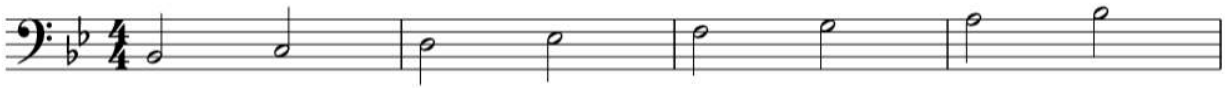
### 33. This Old Man

*f*

5

Musical notation for the first two staves of 'This Old Man'. The first staff is in bass clef, 4/4 time, and B-flat major. It begins with a quarter note G2, followed by a half note G2-A2, a quarter note B2, and a half note A2-G2. The second staff continues with a half note G2, a quarter note A2, a quarter note B2, a quarter note A2-G2, and a half note G2. The piece ends with a double bar line.

### 34. Bb Concert Scale



5



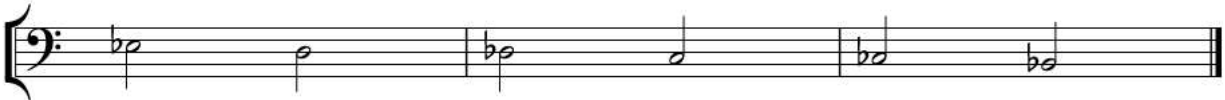
### 35. Chromatic Scale



7



11



# Just For Trombone

## 1. Soft Starts



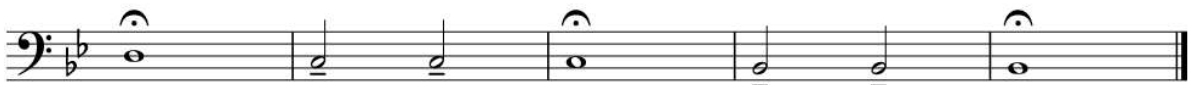
6



## 2. Long Steps



6



## 3. Tongue Starters



4



7



## 4. Lip Slur 1

First line of musical notation for Lip Slur 1, measures 1-4. The key signature has two flats (Bb and Eb) and the time signature is 4/4. Each measure contains a slur over two eighth notes. Measure (1) contains G2 and A2. Measure (2) contains G2 and F2. Measure (3) contains F2 and Eb2. Measure (4) contains Eb2 and G2.

5

Second line of musical notation for Lip Slur 1, measures 5-7. Measure (5) contains G2 and F2. Measure (6) contains F2 and Eb2. Measure (7) contains Eb2 and G2. The line ends with a double bar line.

## 5. Lip Slur 2

First line of musical notation for Lip Slur 2, measures 1-4. The key signature has two flats (Bb and Eb) and the time signature is 4/4. Each measure contains a slur over two eighth notes. Measure (1) contains G2 and A2. Measure (2) contains G2 and F2. Measure (3) contains F2 and Eb2. Measure (4) contains Eb2 and G2.

5

Second line of musical notation for Lip Slur 2, measures 5-7. Measure (5) contains G2 and F2. Measure (6) contains F2 and Eb2. Measure (7) contains Eb2 and G2. The line ends with a double bar line.