

The Complete Book of
Drum Rudiments

Compiled by Jeff Consi

PAGE 1

drumeo

Chapter 1
ROLL RUDIMENTS

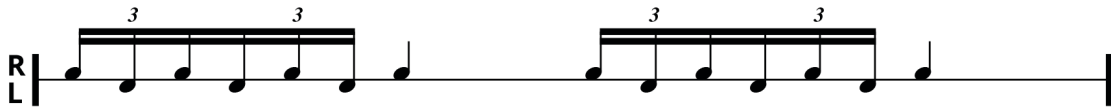
Single Stroke Roll



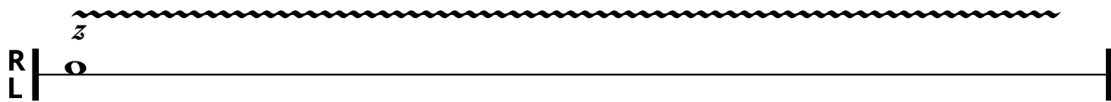
Single Stroke Four



Single Stroke Seven



Multiple Bounce Roll



Double Stroke Roll 



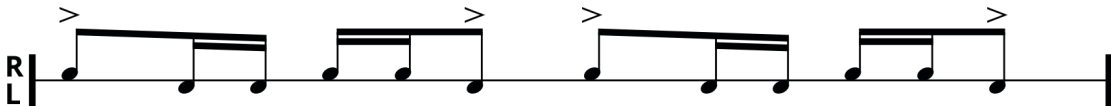
Triple Stroke Roll 



Five Stroke Roll 



Six Stroke Roll 



Seven Stroke Roll 



Nine Stroke Roll 



Ten Stroke Roll 



Eleven Stroke Roll 



Thirteen Stroke Roll 



Fifteen Stroke Roll 



Seventeen Stroke Roll 



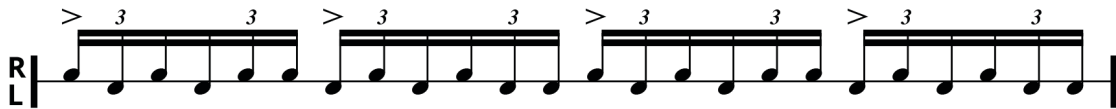
Chapter 2

PARADIDDLE RUDIMENTS

Single Paradiddle



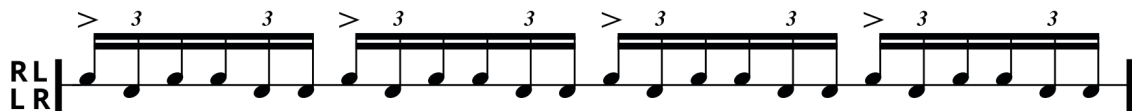
Double Paradiddle



Triple Paradiddle



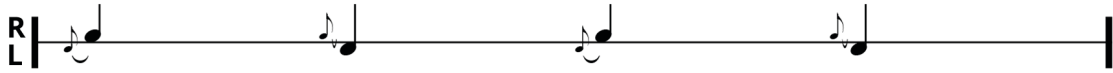
Single Paradiddle-Diddle



Chapter 3

FLAM-BASED RUDIMENTS

Flam 



Musical notation for Flam: A single staff with a treble clef and a vertical line on the left labeled 'R' above and 'L' below. The staff contains four quarter notes, each with a small upward-pointing accent (>) above it. The notes are on the first line of the staff.

Flam Accent 



Musical notation for Flam Accent: A single staff with a treble clef and a vertical line on the left labeled 'R' above and 'L' below. The staff contains four groups of three eighth notes beamed together. Each group starts with an upward-pointing accent (>) above the first note. A '3' is written above each group. The notes are on the first line of the staff.

Flam Tap 



Musical notation for Flam Tap: A single staff with a treble clef and a vertical line on the left labeled 'R' above and 'L' below. The staff contains four groups of two eighth notes beamed together. Each group starts with an upward-pointing accent (>) above the first note. The notes are on the first line of the staff.

Single Flammed Mill 



Musical notation for Single Flammed Mill: A single staff with a treble clef and a vertical line on the left labeled 'R' above and 'L' below. The staff contains four groups of sixteenth notes. Each group starts with an upward-pointing accent (>) above the first note. The notes are on the first line of the staff.

Flamacue 



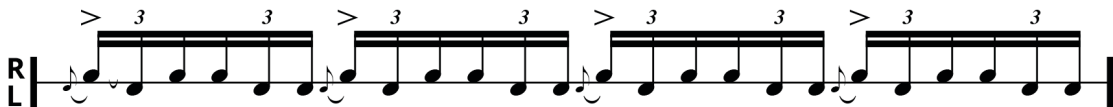
Musical notation for Flamacue. The staff is labeled 'RL' and 'LR'. It features two groups of notes, each consisting of a quarter note followed by a beamed eighth-note pair, with an accent (>) above the first note of each group. The notes are on a single line.

Flam Paradiddle 



Musical notation for Flam Paradiddle. The staff is labeled 'R' and 'L'. It features four groups of notes, each consisting of a quarter note followed by a beamed eighth-note pair, with an accent (>) above the first note of each group. The notes are on a single line.

Flam Paradiddle-Diddle 



Musical notation for Flam Paradiddle-Diddle. The staff is labeled 'R' and 'L'. It features four groups of notes, each consisting of a quarter note followed by a triplet of eighth notes, with an accent (>) above the first note of each group. The triplet groups are marked with a '3' above them. The notes are on a single line.

Inverted Flam Tap 



Musical notation for Inverted Flam Tap. The staff is labeled 'R' and 'L'. It features four groups of notes, each consisting of a quarter note followed by a beamed eighth-note pair, with an accent (>) above the first note of each group. The notes are on a single line.

Pataflafla



RL
LR

Musical notation for 'Pataflafla' on a single staff. It begins with a double bar line, followed by 'RL' on the top line and 'LR' on the bottom line. The notation consists of four measures, each starting with a right-hand eighth note followed by a left-hand eighth note. Each measure contains a triplet of eighth notes on the right hand, indicated by a bracket and an accent (>) above the notes. The notes in the triplet are G4, A4, and B4. The left hand plays a steady eighth-note accompaniment of G3, A3, B3, G3, A3, B3. The piece ends with a double bar line.

Flam Drag



R
L

Musical notation for 'Flam Drag' on a single staff. It begins with a double bar line, followed by 'R' on the top line and 'L' on the bottom line. The notation consists of four measures, each starting with a right-hand eighth note followed by a left-hand eighth note. Each measure contains a triplet of eighth notes on the right hand, indicated by a bracket and a '3' above the notes. The notes in the triplet are G4, A4, and B4. The left hand plays a steady eighth-note accompaniment of G3, A3, B3, G3, A3, B3. The piece ends with a double bar line.

Swiss Army Triplet



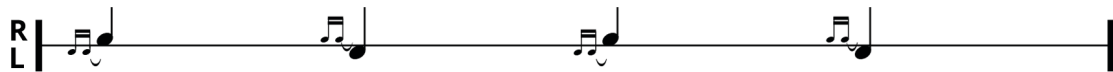
RL
LR

Musical notation for 'Swiss Army Triplet' on a single staff. It begins with a double bar line, followed by 'RL' on the top line and 'LR' on the bottom line. The notation consists of four measures, each starting with a right-hand eighth note followed by a left-hand eighth note. Each measure contains a triplet of eighth notes on the right hand, indicated by a bracket and a '3' above the notes. The notes in the triplet are G4, A4, and B4. The left hand plays a steady eighth-note accompaniment of G3, A3, B3, G3, A3, B3. The piece ends with a double bar line.

Chapter 4

DRAG-BASED RUDIMENTS

Drag Ruff



Single Drag Tap



Double Drag Tap



Single Dragadiddle



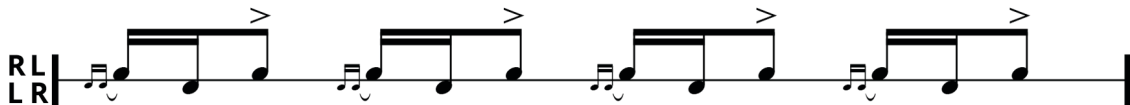
Dragadiddle 1



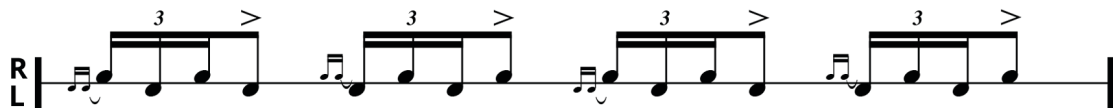
Dragadiddle 2



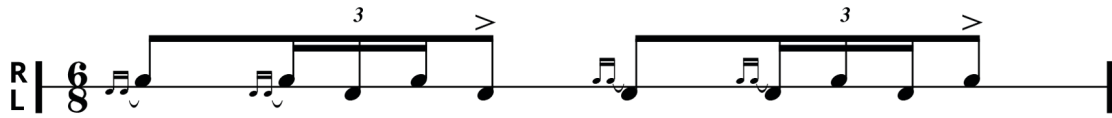
Lesson 25



Single Ratamacue



Double Ratamacue



Triple Ratamacue

